



development of philanthropic
capital

Giving Matters
2015 Annual Report

schuylkill area community
foundation

pillars of the



GREETINGS from the Executive Director

It is a busy and exciting time at Schuylkill Area Community Foundation (SACF). As we move closer to our 50th anniversary celebration in 2017, we have great hopes for the future!

Since 1967, it is YOU - our fund holders, donors, professional advisors, and community partners - who are the greatest measures of our success. It is evident by your dedication to nonprofit organizations, students, and the quality of life in Schuylkill County. We are very grateful for your dedication to create a stronger and more vibrant community for us all to share.

Community Foundations are designed to build charitable endowment funds that benefit the community forever and help create personal legacies. Your gift and all future earnings from the fund are permanent sources of community capital, helping to do good work now and into the future.

During this past year:

- SACF proudly awarded \$460,111 in grants and scholarships;
- Four new funds were created, bringing the total number of funds to 158;
- Contributions totaled \$789,582 from many donors; and
- Market value of SACF's assets reached \$17,394,914 as of Dec. 31, 2015.

Thank you for supporting the work of Schuylkill Area Community Foundation. Let us all encourage others to GIVE LOCALLY, HELP LOCALLY.

Sincerely,

Eileen Kuperavage, Executive Director

arts & culture
 community
 education
 environment
 health & wellness
 human services

CONTENTS

New Funds	3, 4
Fund Composition	5, 6
Remembrance, Heritage Society	7
Grants	8
Financial Report, AmazonSmile	9

SACF Timeline

community

TYPES OF FUNDS

Designated Funds

ONGOING SUPPORT

Donors may create a fund at the Foundation to benefit a specific organization or to establish an education award. In the event the specified organization ceases to exist, the Foundation is able to adjust the distribution to insure the fund carries out its original purpose and intent.

Donor Advised Funds

INVOLVED ANNUAL GIVING

Through Donor Advised Funds, a donor can have an active hand in his or her charitable giving by having the right to recommend annually to the Foundation which organizations should be supported by the fund. Grants are then made, in the name of the fund, to qualified charities. Since the Foundation administers the fund, donors are assured of its permanence well beyond their own ability to advise.

Field of Interest Funds

TARGET SPECIFIC ISSUES

Field of Interest Funds provide donors the opportunity to support particular areas of interest that reach many organizations. The Foundation distributes earnings to the most appropriate programs within the areas of arts and culture, education, environment, health and wellness, and human services.

Scholarship Funds

EDUCATIONAL SUPPORT

Donors may create scholarships to support students who are graduating from a particular school, attending a particular school, or studying a specific field. Each scholarship is unique and is accomplishing the criteria set forth by the donor.

Unrestricted Funds

PROACTIVE AND RESPONSIVE

Unrestricted Funds provide the Foundation with the greatest flexibility to meet the most pressing and ever changing needs and opportunities within our community.



Eileen Kuperavage, second from left

Congratulations, Eileen!

Eileen Kuperavage, Executive Director, received the 2015 Business Woman of the Year Award presented by the Schuylkill Chamber of Commerce.

During her acceptance speech, she shared with the audience that, "If this award stands for anything, it stands for the united spirit in all of us. I succeed because we succeed and we succeed to meet the challenges and opportunities together."

The countless donors make the work of SACF possible! Thank you for your unwavering dedication to Schuylkill County!



2015
Business Woman
of the Year
Award

1st scholarship fund-
Dr. Rudolph Constien
Scholarship Fund was
created by Helen M. Baldy
in his memory

Ben Franklin Fund-
Community Foundations
across PA received
funding from Benjamin
Franklin's bequest

Growth of 40 new funds
to support many residents
and nonprofits through-
out the community from
2000-2006

Davis Boehmer
Family Fund-
SACF's largest bequest:
\$794,188

50th
Anniversary
Celebration

1967

1975

1979

1994

1997

2000

2006

2008

2015

2017

Established as
Ashland Trusts-
1st contribution/donation
\$1,000

The Reidler Family
created numerous desig-
nated funds for nonprofits
and field of interest funds

Name change to
Schuylkill Area Community
Foundation to reflect the
geographic outreach with donors
throughout Schuylkill County

Milestone -
Foundation assets
reach \$10 million

Various donors and
nonprofit organizations estab-
lish 37 additional charitable
endowment funds for Schuylkill
County from 2009-2015

new funds



**WALK IN
ART CENTER**

Love What Art Can Do

WALK IN ART CENTER ENDOWMENT FUND

The Walk In Art Center (WIAC) established an endowment fund on December 21. The fund earnings of the endowment will be distributed annually to the Walk In Art Center and used at the discretion of WIAC's Board of Directors to support the mission of the organization.

The mission of WIAC is to inspire, equip and celebrate the cultural and creative talent of Schuylkill County.

The Walk In Art Center is home to individual creative studios for working artists, The WIAC Haven Gallery, The Main Gallery, The Student Gallery, rotating exhibits, activities for all ages, and art education covering a broad spectrum of disciplines.

The Walk In Art Center:

- Inspires the community and artists with our working artist studio concept and the multiple rotating exhibits.
- Equips the community and artists through education.
- Invites the community to experience, explore and create art through classes, workshops, art camps and informal discussions.
- Celebrates the arts through the various fundraisers and events hosted throughout the year.



REAGAN REILLY HOPE FUND

The Reagan Reilly Hope Fund was established as a charitable endowment fund at the Schuylkill Area Community Foundation (SACF) in July 2015 by Brianna Osceles. She wants to make a positive impact in the community by helping people with drug and alcohol addiction and by giving hope and inspiration!

Brianna is a native of New Philadelphia. She is now 24 years old, lives in Las Vegas, is on the fast track to music success, and is recording a demo with Grammy-winning producer Damon Elliot. The song is about drug addiction and recovery, a biographical narrative of her life.

The fund earnings of the endowment will be distributed annually to qualified organizations or qualified activities or programs, which support people in Schuylkill County who are in recovery for drug or alcohol addiction.

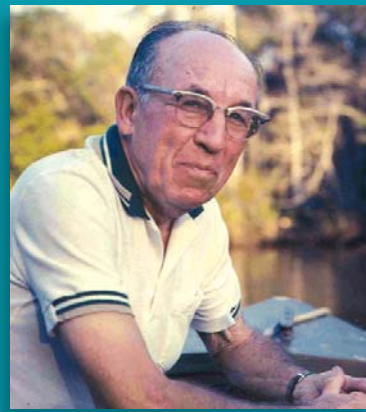


WILLIAM J. JONES, JR. MEMORIAL AWARD

Mr. William Jones, a long-time resident of Mahanoy City, passed away on January 14, 2015. As a tribute to his life, his family accepted memorial donations to establish the William J. Jones, Jr. Memorial Award.

He was an educator for forty-two years serving the Spring Grove and Mahanoy Area School Districts. He served in the United States Army and graduated from East Stroudsburg Teachers College. During his thirty-eight year tenure at Mahanoy Township, and then at Mahanoy Area, he taught elementary physical education and high school health education. Mr. Jones coached football, basketball, track and field, and wrestling. He also served as a bus driver, assistant athletic director and recreation director. As recreation director he instituted, supervised and facilitated many programs, including boys' intramural basketball, women's volleyball, adult swim, summer swim lessons, elementary track and field meets, elementary wrestling, roller skating trips, Teen Canteen activities, playground recreation, and Summer Camp at Lakewood Park.

The William J. Jones, Jr. Memorial Award Fund provides an award to graduating seniors of Mahanoy Area High School who during their high school career has exhibited a commitment to education, sports and/or activities within school or in the community, has maintained a G.P.A. of 2.5 or greater during high school career, and plans to attend on a full time basis an institution of higher education or military service.



FRED V. KNECHT MEMORIAL FUND

Fred Knecht, a longtime resident of Schuylkill Haven, passed away on July 9, 2010. He was publisher emeritus of The Call and The Press & Herald weekly newspapers. Born Nov. 6, 1915 in Calhoun, Oklahoma, he was a son of the late William K. and Agnes Norbeth Knecht. His wife of 68 years, the former Eleanor Hand, Muir, preceded him in death in 2008.

Fred was the third generation publisher of his family in Schuylkill County. His grandfather, William F. Knecht, originated the West Schuylkill Herald, Tower City, in 1898. That paper was acquired by his father, William K. Knecht, in 1922, and then by Fred in 1967.

For the past 118 years, the Knecht family's publications have served the communities of southern and western Schuylkill County through the following predecessor newspapers: The Valley Echo, Tower City; The Tremont News and The West Schuylkill Press, Tremont; The Pinegrove Herald, Pine Grove; Orwigsburg News, Orwigsburg; and The News-Observer, Tamaqua. The merger of The Call and The Press & Herald shortly after Fred's death in 2010 formed South Schuylkill News.

During his lifetime, he worked with Attorney Harry Rubright to write the bequest through his Last Will and Testament. The estate settlement of \$359,151.58 is now pooled for investment purposes with 158 endowment funds managed by the Community Foundation. These funds support different charitable giving goals as determined by the wishes of each donor.

The Fred V. Knecht Memorial Fund will continue Fred's service to southern and western Schuylkill County communities. The annual earnings from the fund will be granted by his children to financially support qualified organizations, projects, or programs principally serving one or more of the geographic areas encompassed by the Blue Mountain School District, Schuylkill Haven Area School District, Pine Grove Area School District, and Williams Valley School District.

"Coming together is the beginning. Keeping together is progress. Working together is success."

~ Henry Ford

composition

Donor Advised

Ashland Rotary Club Charitable Trust
Carlyon Charitable Trust Fund
Friends of the St. Vincent DePaul Societies
of Upper Schuylkill County Fund
Human Services Fund
Fred V. Knecht Memorial Fund
Reidler Family Charitable Fund
Reidler Family Helping Hand Fund
John C. & Helen M. Schreck Memorial Fund
Mabel and Harry Strouse Memorial Fund
Joseph A. Zane, Esq. Family Charitable
Endowment Fund

Designated

Richard W. and Dolores D. Adams Pine
Grove Community Memorial Fund
Ashland Area Historic Preservation Society
Endowment Fund
Ashland Area Midget Football Association,
Inc. Fund
Ashland Girl Scout Campership Fund
Ashland Public Library Fund
Ashland Tri-Centennial Fund
Ashland Volunteer Fire Department,
Washington Fire Company No. 1 and
American Fire Company No. 1 Trust
Mark R. Bell Memorial Award
Bethany Children's Home Fund
John and Anna Breitigan Memorial
Award Fund
Marie M. Campbell Scholarship Fund
The Cepheus Memorial Award Fund
Leonard Chaikowsky Academic Award
Chamber of Commerce Christmas
Decoration Fund
Tara M. Corson, Timothy R. Kimber &
Joseph P. McGeoy Fund
Davis / Boehmer Family Fund
David Derbes Schuylkill River Watershed
Conservation Award Fund
Jeffrey Donnelly Memorial Award Fund

Ethel M. Jones Ermert, R.N., Memorial
Award in Obstetrics
Eureka Park Fund
Stephen Fago Memorial Fund
Faith and Friends Walking
Hand in Hand Fund
Felker-Smith Memorial Fund
Robert C. Fetterolf Memorial
First Baptist Church of Ashland Fund
Foundation for Agriculture and
Resource Management Shadle
Nature Center/Weston Fund
Frackville Free Public Library Fund
Gabriel Chamber Ensemble
Endowment Fund
T. Stuart Goyne Memorial Fund
Leslie E. Harner Instrumental Music
Memorial Fund
*Martha M. Herbert & Michael J.
Herbert, M.D. Charitable Trust
Higher-Ups Park Fund
Emma T. Irwin Memorial Fund
Johnson-Beckno (Pechno)
Memorial Fund
William J. Jones, Jr. Memorial
Award Fund
Betsy Rubright Kent Memorial Fund
Paul M. Krukas Memorial Award Fund
James R. Kruss Memorial Award
Lasting Legacy For Pottsville Fund
Wilfred C. LaVoie Tribute Fund
Paul Lohin Schuylkill River Watershed
Conservation Award Fund
Rae Ann Lubold Memorial Fund
David W. McClafferty Memorial Fund
*Cornelius J. McFadden and Anna M.
McFadden Memorial Trust Fund
Mechanicsville Ladies Auxiliary
Award Fund
Elizabeth Keiser Moser RN
Memorial Fund
Mothers Memorial Fund
Andrew Neidlinger Memorial Fund

North Schuylkill Team of Volunteer
Home Care Fund
Joseph M. O'Neill, Jr. Memorial Fund
Pennsylvania Association for the
Blind Endowment Fund
Pottsville Catholic Alumni Fund
Pottsville Enrichment Fund
Pottsville Lions Charities, Inc.
Endowment Fund
Maud M. Prichard Memorial Fund
Carl F. Reichwein, M.D., Memorial Fund
Reidler Family Library Trust
Ringtown Area Library Fund
William J. "Rex" Roberts
Memorial Fund
Melba S. Royal and Robert A.
Royal Fund
George J. Schilling Memorial Fund
Schuylkill Conservation District
Endowment Fund
Schuylkill County Conservation and
Environmental Improvement
Endowment Fund
Schuylkill County Historical Society
Endowment Fund
Schuylkill County Medical Society
Alliance Award Fund
Schuylkill County Society For Crippled
Children-McAdams Endowment Fund
Schuylkill Haven Free Public
Library Fund
Schuylkill Haven Lions EMS Fund
Schuylkill Headwaters
Association Fund
Schuylkill United Way
Endowment Fund
Schuylkill Women In Crisis
Endowment Fund
David Lee Sener Memorial Award
Richard and Mildred Sharp
Memorial Fund
Spartan Wrestling Boosters and
Coaches 2004-2012 Award Fund

More Information: Please visit www.sacfoundation.com for full descriptions of SACF funds.

of funds

PHILANTHROPISTS

Thank you for contributing to the Foundation's work. A complete list of donors is available on the website at www.sacfoundation.com. If we inadvertently omitted a contributor, please accept our sincere apology.

St. Paul's Historic Cemetery
Endowment Fund
Roy P. Steeley Music Scholarship Fund
Tim Stine Memorial Fund
Adeline Strouse Memorial Fund
Patricia Freeh-Stefanek Tamaqua Area
Community Partnership Endowment Fund
Jean A. Tielman, R.N. Memorial Fund
Elmer W. Toewe Memorial Fund
Francis J. Towey, Jr. Memorial Award Fund
Craig R. Troutman Memorial Award Fund
Ruth A. Wagner Memorial Fund
Walk In Art Center Endowment Fund
Washington Fire Company Community
Ambulance Fund
Beatrice Wasley Fund
Edward H. Watkins Memorial Fund
Mary E. and Warren E. Wert and Gertrude
C. Shuler Memorial Fund
Fred J. Wiest and Elizabeth S. Wiest
Memorial Fund
Willow Park Fund
Loretta Pollack Woznisky-Lonoskie Fund

Field of Interest

Ashland Area Scouting Fund
Ashland Mutual Fire Insurance Company Fire
and Safety Fund
Ben Franklin Trust
The Diversity Fund for Schuylkill County
Fenstermacher/Hadesty's Legacy Fund
Dr. Gail D. Mackey, VMD, DABVP Animal Fund
Isabelle Ross Mettam Performing Arts Fund
The Nature Fund
Reagan Reilly Hope Fund
Charles Werner Endowment Fund

Scholarships

Richard W. and Dolores D. Adams Memorial
Scholarship Fund
Blaze Belfiore Memorial Scholarship Fund
Butler Township High School Alumni
Scholarship Fund
Carr-Willower Memorial Scholarship Fund
James D. Collins Memorial Scholarship Fund
Dr. Rudolph A. Constien Scholarship Fund
John Rich Curran Memorial Scholarship Fund
FARM Youth Scholarship Fund
Elizabeth K. Frank Memorial Music Fund
*Martha M. Herbert & Michael J. Herbert,
M.D. Charitable Trust
Huntzinger-Schadel Family Scholarship Trust
Alice E. Kear Music Scholarship Fund
Butch Kennedy Memorial Award Fund
Frederick T. Kull & Betty A. Kull
Memorial Fund
Frederick T. Kull & Betty A. Kull
Scholar-Athlete Fund
Mary I. Kull Memorial Fund
Lavelle AMVETS Post #156 Scholarship Fund
Shirley Manbeck Veterinary Scholarship Fund
Ralph W. Morgan Memorial Scholarship Fund
Dorothy Wewer Narcovich Scholarship Fund
Billie Payne Scholarship Fund
Pflugger-Przybylik Family Scholarship Fund
Marie Bossler Phi Delta Kappa Kutztown
Chapter Scholarship Fund
Pottsville Lions Charities, Inc.
Scholarship Fund
Hunter William Renninger Memorial
Scholarship Fund
The James J. and Mary Edith Rhoades
Scholarship Fund
David R. Schmaldienst Scholarship Fund

Schuylkill Haven Lions Community Charities
Healthcare Scholarship Fund
Dr. Robert Douglas Spencer Memorial Fund
Ryan Paul Stankavage Memorial
Scholarship Fund
Joyce M. Stankavage, R.N. Memorial
Scholarship Fund
Chester P. Steinger Memorial Fund
(Accounting)
Chester P. Steinger Memorial Fund
(Medical)
Warren and Marcella Stutzman Memorial
Scholarship Fund
Raymond L. & Jean D. Tilmont Memorial
United Steel Workers of America, Local 14372,
Scholarship Fund

Unrestricted

Elwood T. Bracey Fund
The Citizens' National Bank of Ashland
Community Fund
Marian E. Fenstermacher Memorial Fund
Friends of the Foundation Fund
Laubenstein Memorial Fund
Lauer Community Fund
*Cornelius J. McFadden and Anna M. McFadden
Memorial Trust Fund
Frank J. Pepper & Thomas J. Pepper
Memorial Fund
Eleanor B. Spencer Memorial Fund

**Fund is listed under two categories.*

REMEMBERING RICHARD W. ADAMS, 1934-2015



Mr. Adams, a resident of Pine Grove, has been a part of the

Community Foundation family since 2001. At that time, he established two endowment funds when his wife, Dolores, "Tootie," passed away: Dolores D. Adams Memorial Scholarship Fund and Dolores D. Adams Pine Grove Community Memorial Fund. Then in 2012, Mr. Adams requested adding his name to both Funds.

Prior to his death, Mr. Adams designated the Schuylkill Area Community Foundation as partial beneficiary of investment accounts and requested memorials gifts be made to the Richard W. and Dolores D. Adams Memorial Scholarship Fund as a lasting tribute to his memory.

The charitable endowment funds will continue supporting students graduating from the Pine Grove Area School District, as well as, the Pine Grove Ambulance Association (EMS) and the Pine Grove Hose, Hook, and Ladder Company.

THE HERITAGE SOCIETY AWARD FOR 2015



We are pleased to announce the 2015 Heritage Society Recipient:
David J. Rossi. Esq.

Attorney Rossi is a partner in the Law Firm of Zane, Rossi, Conville & Harley, specializing in the areas of Personal Injury and Wrongful Death, Real Estate, Probate and Estate Planning. He is a graduate of Susquehanna University and Capital University Law School.

He was selected for this award based upon his involvement with Richard W. Adams and the Richard W. and Dolores D. Adams Memorial Scholarship Fund for students graduating from the Pine Grove Area School District. Together, we will continue to honor his legacy.

The Heritage Society Award was created to acknowledge the professional advisors who trust the Community Foundation's ability to serve their clients. These advisors encourage donors to establish a named endowment fund that will support the area's nonprofit organizations and residents throughout Schuylkill County.

James Bohorad, Esq.

George Day

Karen Kenderdine

Allen Kiefer

M&T Investment Group

David Rattigan, Esq.

Richard Rompalo, C.P.A.

David J. Rossi, Esq.

Harry Rubright, Esq.

Leonard Shumack, Esq.

E. Lori Smith

Harry Strouse, Esq.

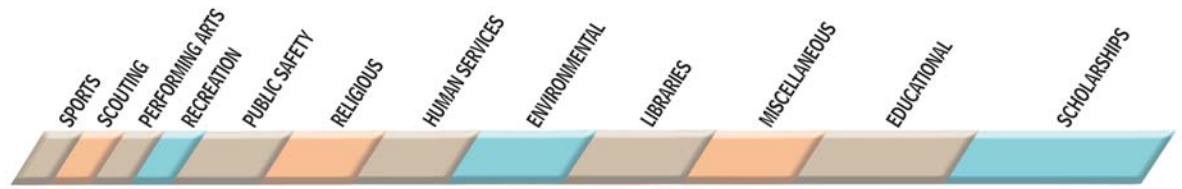
Keith J. Strouse, Esq.

Frank Toole, Esq.

Rob Ulaner

J. Robert Zane, Esq.

2015 grants



Educational

(\$63,895.88 – 13.89%)

Ashland Area Historical Society
DonorsChoose.org
Friends School of Baltimore
KU Campus Store
Lycoming College, Alumni Fund
Marian Catholic High School
Minersville Area School District
Nativity B.V.M. High School
Northeast PA Manufacturers & Employers Council, Inc.
The Odyssey School
Schuylkill Conservation District
Shamokin Area High School Alumni Association
St. Nicholas Ukrainian Catholic School
Sweet Arrow Lake Conservation Association
The Trinity College Fund
Various School Awards

Environmental

(\$43,677.66 – 9.49%)

Foundation for Agriculture and Resource Management
Hawk Mountain Sanctuary Association
Mahanoy Creek Watershed Association
PA Institute for Conservation Education
Schuylkill Conservation District
Schuylkill County Conservation and Environmental Improvement Endowment Fund
Schuylkill Headwaters Association, Inc.

Human Services

(\$38,888.95 – 8.45%)

American Red Cross Schuylkill County Chapter
Ashland Ministerial Association Avenues
Baptist Children's Services
Bethany Children's Home
Big Brothers Big Sisters of Schuylkill County
Canine Partners for Life
Care Net Pregnancy Center of Schuylkill County
Child Development, Inc.
Diakon Team of Volunteer Home Care
Pennsylvania Association for the Blind
The Salvation Army
Schuylkill County Society For Crippled Children
Schuylkill United Way

Schuylkill Women in Crisis

The Seeing Eye, Inc.

Sexual Assault Resource & Counseling Center (SARCC)

St. Joseph Center for Special Learning, Inc.

St. Joseph's Roman Catholic Church

St. Stanislaus Roman Catholic Church

St. Vincent DePaul Church

Libraries

(\$45,676.42 – 9.93%)

Ashland Public Library
Frackville Free Public Library
Mahanoy City Public Library
Minersville Public Library
Orwigsburg Area Free Public Library
Port Carbon Public Library
Pottsville Free Public Library
Ringtown Area Library
Schuylkill Haven Free Public Library
Shamokin/Coal Township Public Library
Tri-Valley Free Public Library

Miscellaneous

(\$54,025.07 – 11.74%)

Ashland Area Chamber of Commerce
Ashland Area Historical Society
Borough of Ashland
Charles Baber Cemetery
Charles Baber Preservation Trust
City of Pottsville
Downtown Shenandoah, Inc.
Hillside SPCA
Lasting Legacy for Pottsville
Masonic Charities
Millersburg Ferry Boat Association
The Rotary Foundation
Schuylkill Area Community Foundation
Schuylkill County Historical Society
Shriners Hospital - Philadelphia
St. Paul's Lutheran Church of Port Carbon
Tamaqua Area Community Partnership
Twin County Lions Club Foundation
United Presbyterian Church

Performing Arts

(\$6,050.37 – 1.31%)

Anthracite Philharmonic
Ashland Area Community Choir
Coach House Players Inc.
Gabriel Chamber Ensemble
Lift Your Spirits Performing Arts
Schuylkill Choral Society, Inc.
Schuylkill County Council for the Arts
Sweet Arrow Lake Conservation Association

Public Safety

(\$32,523.64 – 7.07%)

American Hose Co.
Ashland Fire Police Association
Hegins Area Ambulance
Klingerstown Fire Company
Mahantongo Fire Company
Nuremberg Community Ambulance Association
Nuremberg Weston Volunteer Fire Company
Pine Grove EMS
Pine Grove Hose, Hook, and Ladder
Pottsville Lions Charities, Inc.
Schuylkill Haven Area EMS
Washington Fire Co. Community Ambulance Assoc. Inc.
Washington Fire Company No. 1

Recreation

(\$9,387.28 – 2.04%)

American Hose Co. (Fireworks)
Ashland Area Chamber of Commerce
Ashland Borough/Ashland Recreation
Friends of Gordon - FOG
Minersville Area Skatepark Association
Pine Grove Borough Recreation Board
Schuylkill County Sportsmen's Advisory Board
Schuylkill Haven Island Park
Tremont Community Organization

Religious

(\$37,709.41 – 8.20%)

Church of Saint Patrick
Emmanuel Church of Christ
First United Methodist Church of Shamokin
Hegins Valley Mennonite Church
Pine Grove Area Council of Churches
Pine Grove Community Church
Sisters of St. Casimir
St. John's Evangelical Lutheran Church
St. Joseph's Roman Catholic Church
St. Mauritius Roman Catholic Church
St. Paul's United Church of Christ
United Presbyterian Church

Scholarships

(\$125,259.98 – 27.22%)

Alice E. Kear Music Scholarship
Billie Payne Scholarship
Blaze Belfiore Memorial Scholarship
Butler Township High School Alumni Scholarship
Carr-Willower Memorial Scholarship
Chester P. Steinger Memorial (Accounting) Scholarship

Chester P. Steinger Memorial (Medical) Scholarship
Dorothy Wewer Narcovich Scholarship
Dr. Robert Douglas Spencer Memorial Scholarship
Dr. Rudolph A. Constien Scholarship
FARM Youth Scholarship
Frederick T. Kull and Betty A. Kull Memorial Scholarship
Frederick T. Kull and Betty A. Kull Scholar-Athlete Scholarship
Hunter William Renninger Memorial Scholarship
Huntzinger-Schadel Family Scholarship
James D. Collins Memorial Scholarship
John Rich Curran Memorial Scholarship
Joyce M. Stankavage, R.N. Memorial Scholarship
Marie Bossler Phi Delta Kappa Kutztown Chapter Scholarship
Martha M. Herbert and Michael Herbert, M.D. Science and Mathematics Scholarship
Mary I. Kull Memorial Scholarship
Pfluger-Przybylik Family Scholarship
Pottsville Lions Charities, Inc. Scholarship
Ralph W. Morgan Scholarship
Richard W. and Dolores D. Adams Memorial Scholarship
Ryan Paul Stankavage Memorial Scholarship
Schuylkill Haven Lions Community Charities Healthcare Scholarship
Shirley Manbeck Veterinary Scholarship
The James J. and Mary Edith Rhoades Scholarship
United Steel Workers of America, Local 14372, Scholarship
Warren W. Stutzman Memorial Scholarship

Scouting

(\$1,921.68 – 0.42%)

Ashland Boy Scout Troop 745
Ashland Cub Scout Pack 749
Girl Scouts in the Heart of Pennsylvania

Sports

(\$1,094.68 – 0.24%)

Ashland Area Girls' Softball Association
Ashland Area Midget Football Association
Ashland Little League Baseball, Inc.

Total:

\$460,111.02

financial report

Statement of Financial Position as of December 31, 2015

ASSETS

Cash and Cash Equivalents	\$ 547,833
Investments:	
Equities	\$ 12,075,835
Preferred Stocks	1,823,440
Master Limited Partnerships	604,567
Mutual Funds	2,506,160
Corporate Bonds	12,365
Fixed Assets - Net of Accumulated Depreciation	33,638

TOTAL ASSETS \$ **17,603,838**

LIABILITIES

Funds Held for Other Agencies	\$ 285,282
Deferred Revenues	28,767
Scholarships Payable	46,433
Accrued Expenses	5,029

TOTAL LIABILITIES \$ **365,511**

NET ASSETS

Unrestricted	\$ 8,544
Temporarily Restricted	5,268,188
Permanently Restricted	11,961,595

TOTAL NET ASSETS \$ **17,238,327**

TOTAL LIABILITIES AND NET ASSETS \$ **17,603,838**

You can support the SACF every time you shop Amazon with **amazon**smile

Schuylkill Area Community Foundation has joined AmazonSmile. SACF is registered with Amazon as part of the AmazonSmile Campaign.

- Amazon donates 0.5% of the price of your eligible AmazonSmile purchases to the Schuylkill Area Community Foundation.
- AmazonSmile is the same Amazon you know. Same products, same prices, same service.
- Support the SACF by starting your shopping at smile.amazon.com. smile.amazon.com/ch/23-6422789

The official registration and financial information for Schuylkill Area Community Foundation is registered with the Pennsylvania Department of State and may be obtained by calling toll free, within Pennsylvania, 1-800-732-0999. Registration does not imply endorsement. Copies of the annual audit report and Form 990 are available at www.sacfoundation.com or the Foundation office.

The Foundation is exempt from federal income taxes under section 501(c)(3) of the Internal Revenue Code and classified as a public charity under section 509(a)(1). It is also exempt from state taxes and is registered with the Pennsylvania Bureau of Charitable Organizations. All contributions are accepted for use subject to the Foundation's Articles of Incorporation and By-Laws.

Financial Report prepared by Jones & Co.

Publication of our Annual Report was underwritten by generous support from:

**First National Bank,
Carnegie Investment Counsel,
and Oppenheimer & Co. Inc.**



PART OF THE FABRIC OF OUR
COMMUNITY

Supporting the people and places that make it special.

fnb-online.com | 1-800-555-5455



First National Bank

Karen Kenderdine
396 S. Centre Street, P.O. Box 1223
Pottsville, PA 17901

 EQUAL HOUSING LENDER, MEMBER FDIC



Investment Advisor

Carnegie Investment Counsel
1629 Locust Street
Philadelphia, PA 19103



Howard A. Trauger

MANAGING DIRECTOR - PHILADELPHIA / **Phone** 215.735.0299

Scott R. Inglis

REGIONAL DIRECTOR/PORTFOLIO MANAGER / **Phone** 484.841.1252

www.CarnegieInvest.com | info@CarnegieInvest.com



Mark G. Serrian

Director – Investments
mark.serrian@opco.com
Phone: (570) 622-4844

James E. Marconis

Associate Director – Investments
james.marconis@opco.com
Phone: (570) 622-4844

Oppenheimer & Co. Inc.

101 S Centre Street • Pottsville, PA 17901
Toll Free: (800) 288-7862 • Fax: (570) 622-6832

Office of Supervisory Jurisdiction:

Oppenheimer & Co. Inc.
500 Old York Road • Jenkintown, PA 19046 • (215) 887-7660
Oppenheimer & Co. Inc. Transacts Business on All Principal Exchanges and Member SIPC

Mission Statement

The mission of the Schuylkill Area Community Foundation is to serve the interests of the philanthropic donors and to become stewards of financial gifts that support our community.

Vision Statement

Schuylkill Area Community Foundation envisions a community that embraces philanthropy to sustain generations today and tomorrow!

FOUNDATION LEADERSHIP

Board of Directors

Marie Beauchamp	Ann F. Snyder
Richard L. Berger	Mark Snyder, Ed.D.
James C. Bohorad, Esq.	Frank J. Staudenmeier
Debbie Yuengling Ferhat	Keith J. Strouse, Esq.
Gary R. Glessner	Louis David Truskowsky
John Gradwell	J. Robert Zane, Esq.
M. Irvil Kear, D.A.	Joann Zogby, Ed.D.
G. Fred Schilling	

Staff

Eileen Kuperavage, Executive Director
ekuperavage@verizon.net


Sharon Koszyk, Program Manager
skoszyk@verizon.net

Marybeth Matz, Assistant Program Manager
mmatz1@verizon.net

Schuylkill Area
Community
Foundation

216 South Centre Street · Pottsville, PA 17901-3501
Phone: (570) 624-7223 · Fax: (570) 624-7256

www.sacfoundation.com

 Follow us on Facebook